

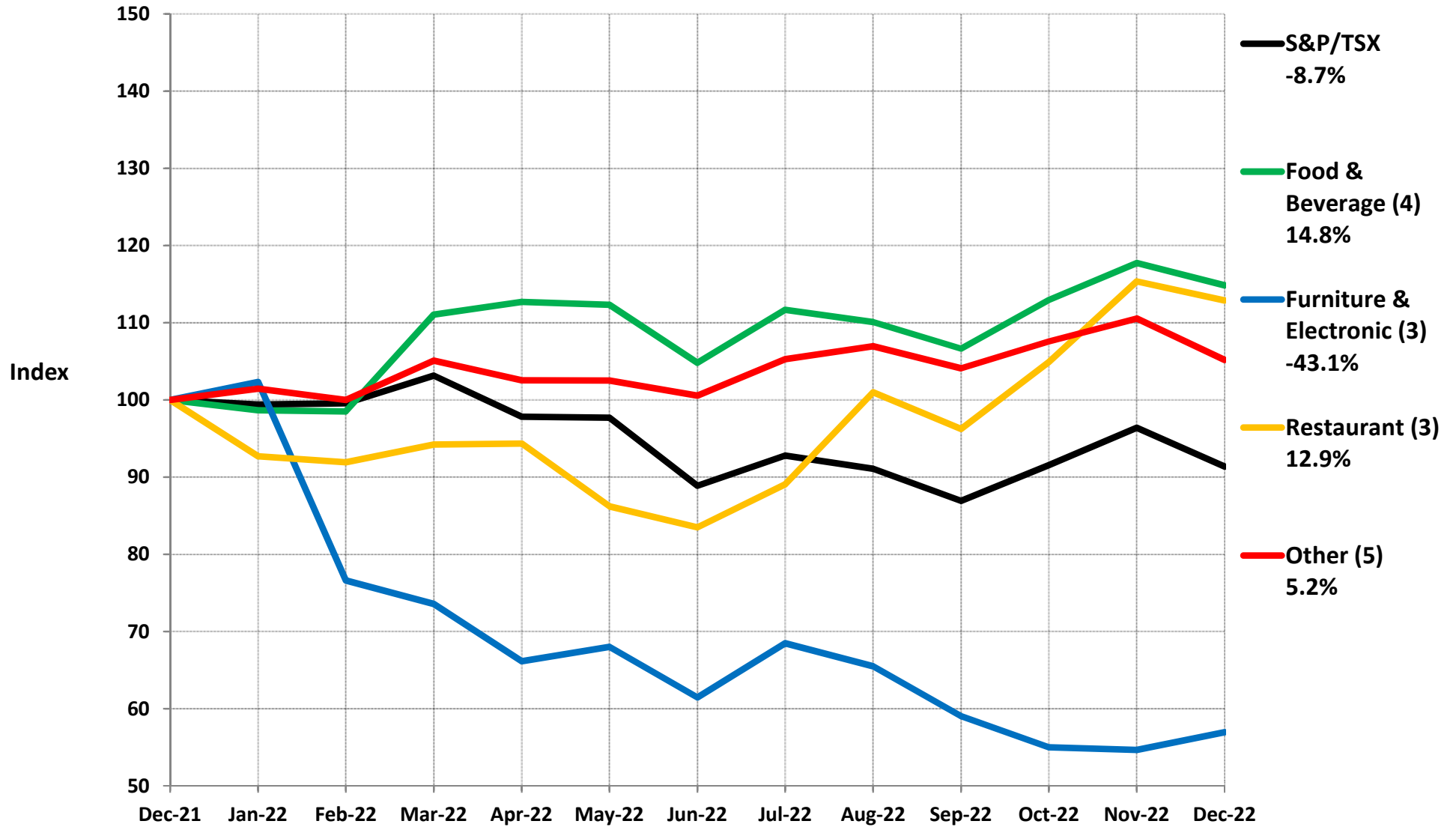
Canadian Public Company Indices
December 31, 2022

Sector	Sub-Sector	Number of Companies/ Trusts	% Change Since		% Change Since	
			31-Dec-13	Ranking	31-Dec-21	Ranking
Energy	Production	19	14.36%	31	47.53%	1
Energy	Services	23	-59.37%	41	36.76%	2
Home & Building Products	Other	1	78.06%	17	21.27%	3
Gaming & Entertainment	Gaming	1	-45.20%	40	17.58%	4
Food Processing	Other	2	35.33%	26	16.52%	5
Retail	Food & Beverage	4	252.75%	2	14.84%	6
Retail	Restaurants	3	80.51%	16	12.88%	7
Food Processing	Diversified	2	103.11%	11	10.10%	8
Transportation	Rail	2	183.04%	5	6.75%	9
Retail	Other	5	89.52%	14	5.17%	10
Mining	Other	11	68.87%	21	4.82%	11
Energy	Distribution	6	12.48%	32	3.68%	12
Transportation	Other	2	230.19%	3	3.37%	13
Utilities	Electricity	4	72.11%	19	3.05%	14
Transportation	Trucking	2	183.50%	4	-2.12%	15
Transportation	Air	2	156.23%	6	-2.43%	16
Financial Services	Insurance	8	36.23%	25	-3.10%	17
Mining	Gold	20	102.42%	12	-4.91%	18
Communications & Printing	Communications	6	37.85%	24	-5.90%	19
Technology	Software	6	131.06%	9	-6.04%	20
Food Processing	Seafood	1	-42.43%	39	-7.65%	21
Distribution	Machinery & Equipment	3	85.96%	15	-7.84%	22
Food Processing	Beverage	3	77.75%	18	-11.40%	23
Financial Services	Bank	8	54.30%	22	-12.57%	24
Manufacturing	Other	18	4.92%	33	-13.02%	25
Financial Services	Other	10	133.43%	8	-13.12%	26
Distribution	Fuel	2	23.08%	27	-14.27%	27
Construction & Engineering	Engineering	3	42.45%	23	-14.45%	28
Utilities	Diversified	6	18.32%	29	-17.15%	29
Distribution	Other	11	71.92%	20	-18.46%	30
Manufacturing	Automotive	5	111.13%	10	-19.95%	31
Real Estate	Commercial	10	0.42%	35	-21.59%	32
Real Estate	Diversified	3	-31.79%	36	-21.79%	33
Communications & Printing	Printing	1	4.51%	34	-24.77%	34
Utilities	Renewables	3	90.43%	13	-26.12%	35
Home & Building Products	Forestry	7	19.06%	28	-27.20%	36
Real Estate	Residential	8	17.22%	30	-29.49%	37
Construction & Engineering	Construction	2	-41.08%	38	-36.23%	38
Real Estate	Other	6	155.30%	7	-38.85%	39
Gaming & Entertainment	Entertainment	1	-81.73%	42	-40.85%	40
Retail	Furniture & Electronic	3	-32.99%	37	-43.06%	41
Technology	Other	7	505.89%	1	-57.10%	42
		<u>250</u>				

Canadian Public Company Indices
December 31, 2022

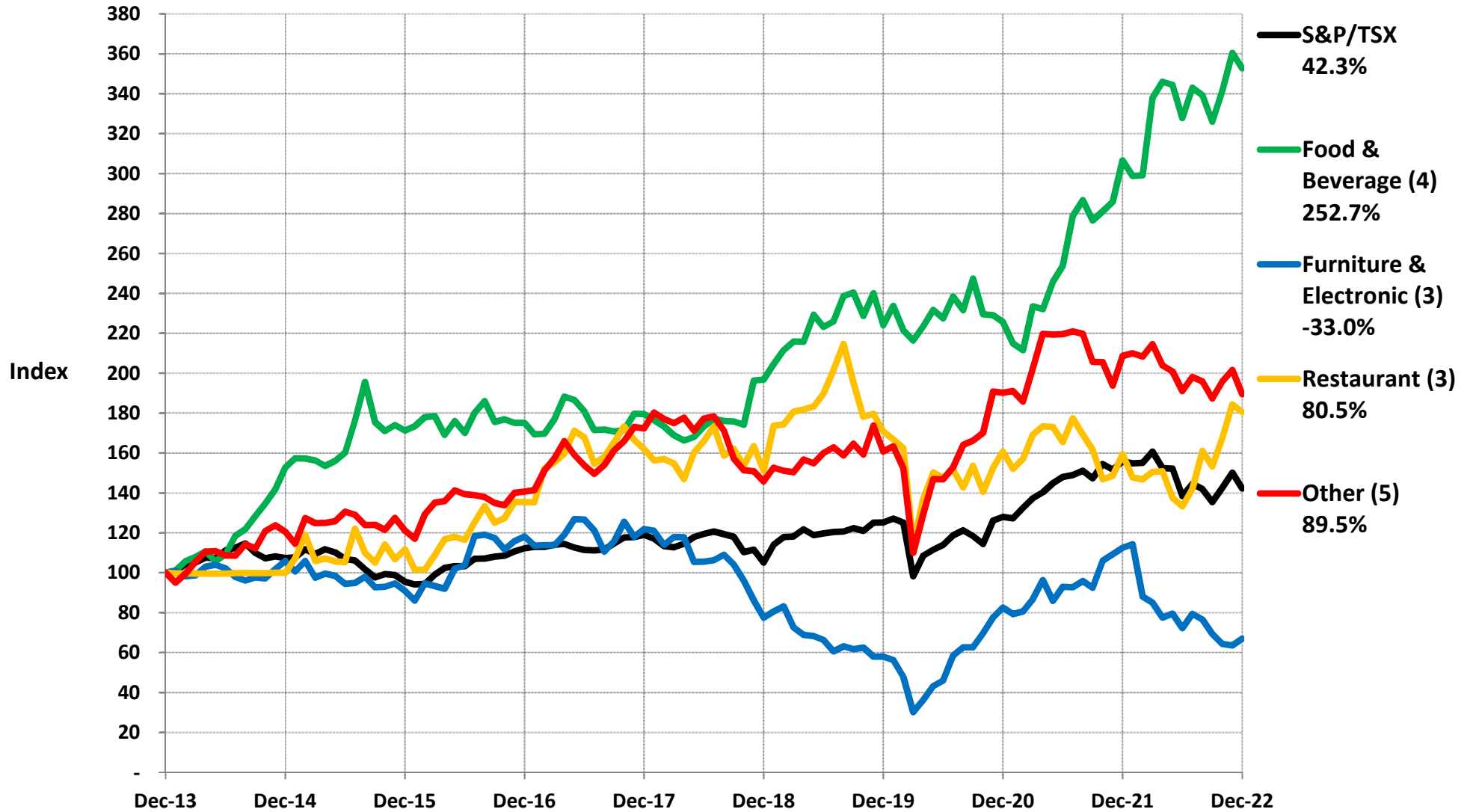
Sector	Sub-Sector	Number of Companies/ Trusts	%		%	
			Change Since 31-Dec-13	Ranking	Change Since 31-Dec-21	Ranking
Technology	Other	7	505.89%	1	-57.10%	42
Retail	Food & Beverage	4	252.75%	2	14.84%	6
Transportation	Other	2	230.19%	3	3.37%	13
Transportation	Trucking	2	183.50%	4	-2.12%	15
Transportation	Rail	2	183.04%	5	6.75%	9
Transportation	Air	2	156.23%	6	-2.43%	16
Real Estate	Other	6	155.30%	7	-38.85%	39
Financial Services	Other	10	133.43%	8	-13.12%	26
Technology	Software	6	131.06%	9	-6.04%	20
Manufacturing	Automotive	5	111.13%	10	-19.95%	31
Food Processing	Diversified	2	103.11%	11	10.10%	8
Mining	Gold	20	102.42%	12	-4.91%	18
Utilities	Renewables	3	90.43%	13	-26.12%	35
Retail	Other	5	89.52%	14	5.17%	10
Distribution	Machinery & Equipment	3	85.96%	15	-7.84%	22
Retail	Restaurants	3	80.51%	16	12.88%	7
Home & Building Products	Other	1	78.06%	17	21.27%	3
Food Processing	Beverage	3	77.75%	18	-11.40%	23
Utilities	Electricity	4	72.11%	19	3.05%	14
Distribution	Other	11	71.92%	20	-18.46%	30
Mining	Other	11	68.87%	21	4.82%	11
Financial Services	Bank	8	54.30%	22	-12.57%	24
Construction & Engineering	Engineering	3	42.45%	23	-14.45%	28
Communications & Printing	Communications	6	37.85%	24	-5.90%	19
Financial Services	Insurance	8	36.23%	25	-3.10%	17
Food Processing	Other	2	35.33%	26	16.52%	5
Distribution	Fuel	2	23.08%	27	-14.27%	27
Home & Building Products	Forestry	7	19.06%	28	-27.20%	36
Utilities	Diversified	6	18.32%	29	-17.15%	29
Real Estate	Residential	8	17.22%	30	-29.49%	37
Energy	Production	19	14.36%	31	47.53%	1
Energy	Distribution	6	12.48%	32	3.68%	12
Manufacturing	Other	18	4.92%	33	-13.02%	25
Communications & Printing	Printing	1	4.51%	34	-24.77%	34
Real Estate	Commercial	10	0.42%	35	-21.59%	32
Real Estate	Diversified	3	-31.79%	36	-21.79%	33
Retail	Furniture & Electronic	3	-32.99%	37	-43.06%	41
Construction & Engineering	Construction	2	-41.08%	38	-36.23%	38
Food Processing	Seafood	1	-42.43%	39	-7.65%	21
Gaming & Entertainment	Gaming	1	-45.20%	40	17.58%	4
Energy	Services	23	-59.37%	41	36.76%	2
Gaming & Entertainment	Entertainment	1	-81.73%	42	-40.85%	40
		250				

Retail Most Recent Year



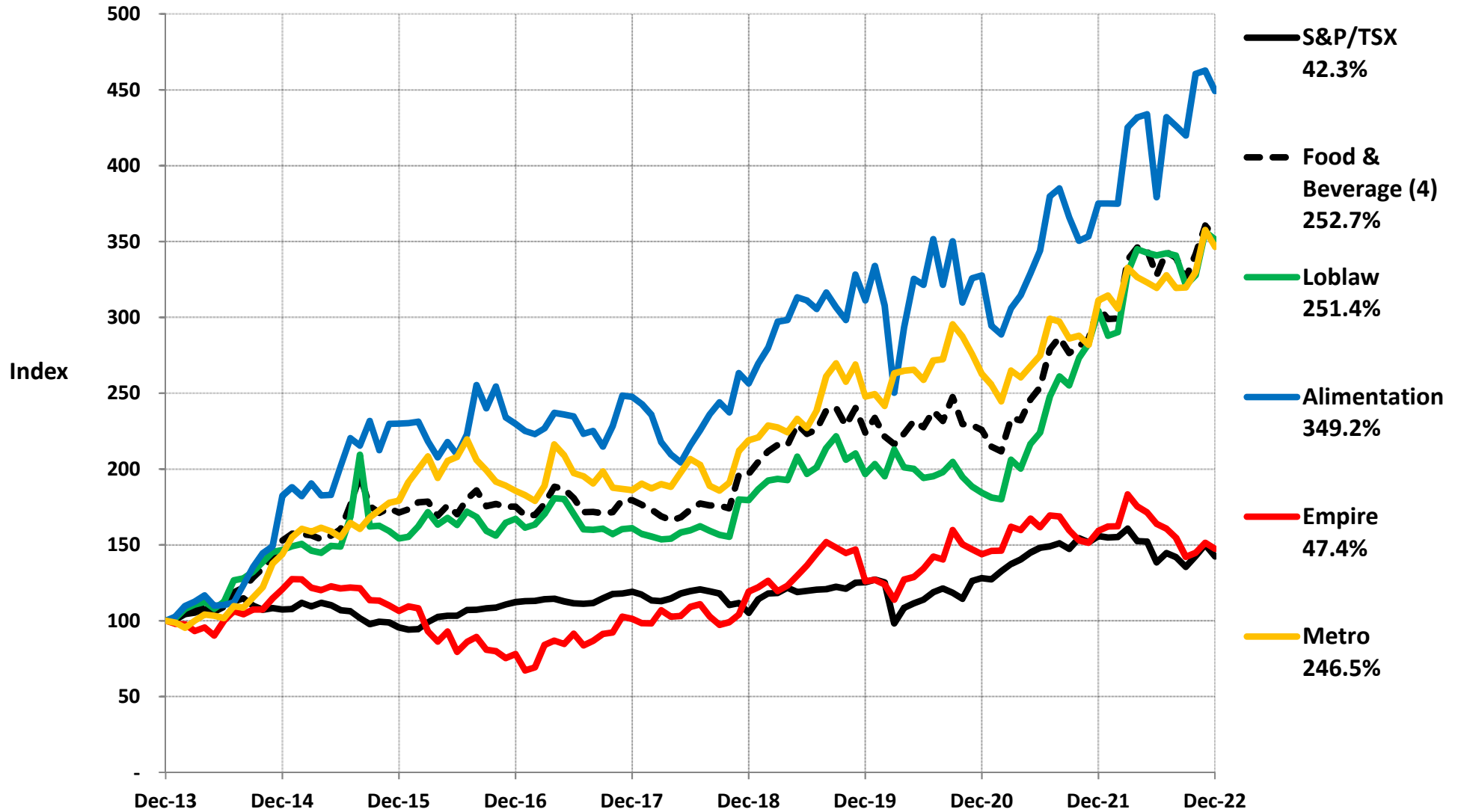
Retail

Since December 31, 2013



Sources: Financial Statements & Yahoo Finance

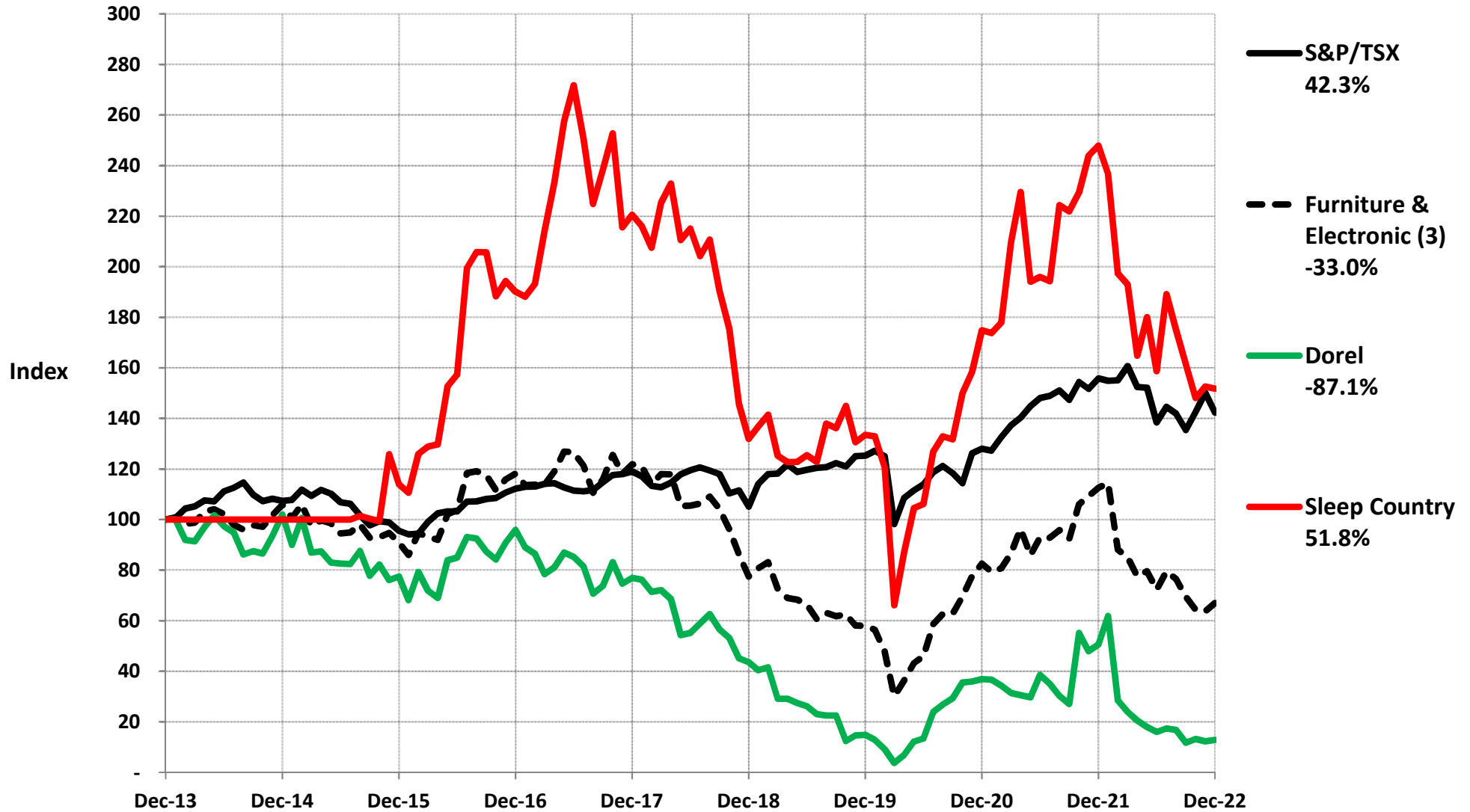
Retail Food & Beverage Since December 31, 2013



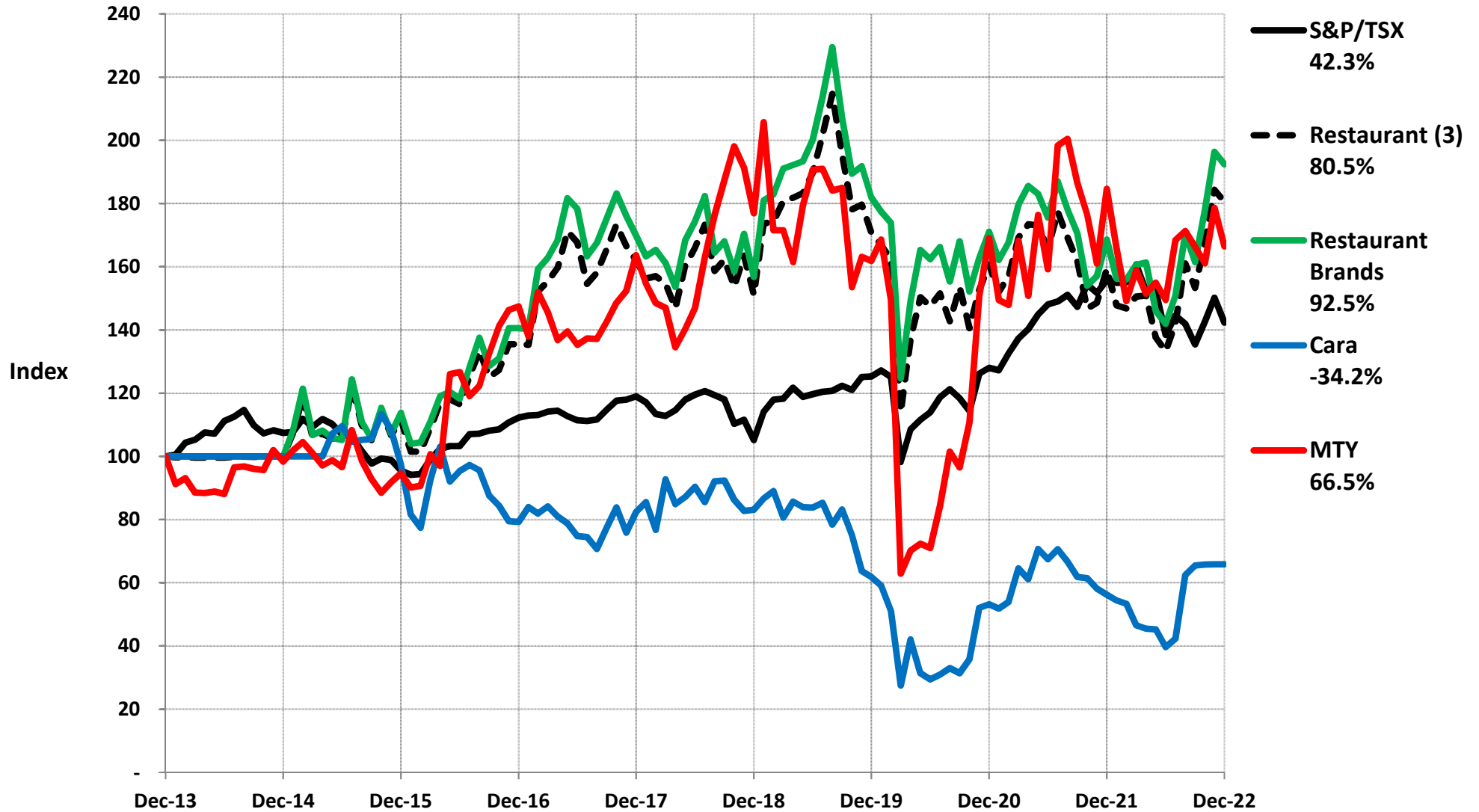
Retail

Furniture & Electronics

Since December 31, 2013



Retail Restaurants Since December 31, 2013



Retail Other Since December 31, 2013

