

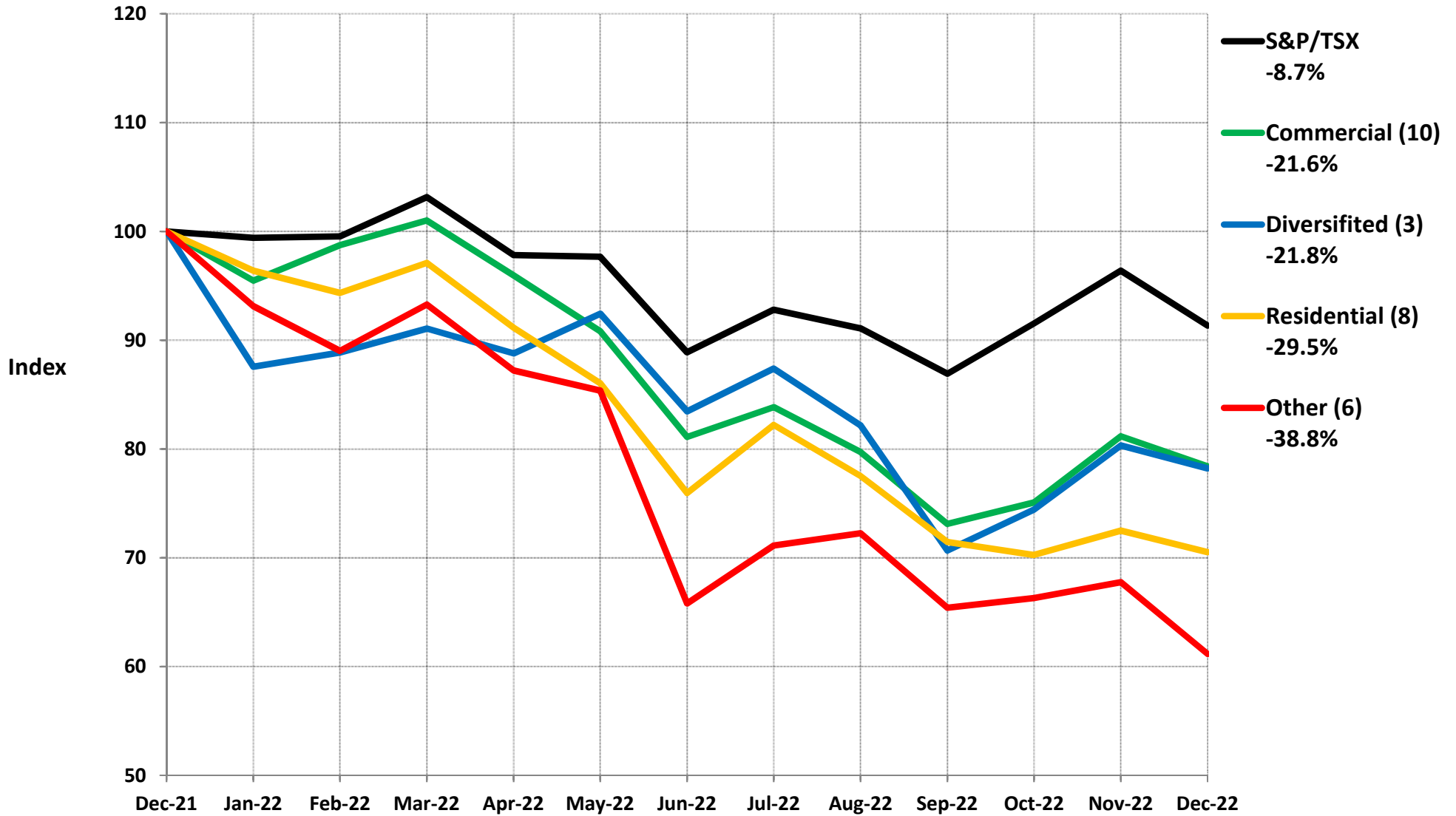
Canadian Public Company Indices
December 31, 2022

| Sector | Sub-Sector | Number of Companies/ Trusts | % | | % | |
|----------------------------|------------------------|--------------------------------------|------------------------------|---------|------------------------------|---------|
| | | | Change Since 31-Dec-13 | Ranking | Change Since 31-Dec-21 | Ranking |
| Energy | Production | 19 | 14.36% | 31 | 47.53% | 1 |
| Energy | Services | 23 | -59.37% | 41 | 36.76% | 2 |
| Home & Building Products | Other | 1 | 78.06% | 17 | 21.27% | 3 |
| Gaming & Entertainment | Gaming | 1 | -45.20% | 40 | 17.58% | 4 |
| Food Processing | Other | 2 | 35.33% | 26 | 16.52% | 5 |
| Retail | Food & Beverage | 4 | 252.75% | 2 | 14.84% | 6 |
| Retail | Restaurants | 3 | 80.51% | 16 | 12.88% | 7 |
| Food Processing | Diversified | 2 | 103.11% | 11 | 10.10% | 8 |
| Transportation | Rail | 2 | 183.04% | 5 | 6.75% | 9 |
| Retail | Other | 5 | 89.52% | 14 | 5.17% | 10 |
| Mining | Other | 11 | 68.87% | 21 | 4.82% | 11 |
| Energy | Distribution | 6 | 12.48% | 32 | 3.68% | 12 |
| Transportation | Other | 2 | 230.19% | 3 | 3.37% | 13 |
| Utilities | Electricity | 4 | 72.11% | 19 | 3.05% | 14 |
| Transportation | Trucking | 2 | 183.50% | 4 | -2.12% | 15 |
| Transportation | Air | 2 | 156.23% | 6 | -2.43% | 16 |
| Financial Services | Insurance | 8 | 36.23% | 25 | -3.10% | 17 |
| Mining | Gold | 20 | 102.42% | 12 | -4.91% | 18 |
| Communications & Printing | Communications | 6 | 37.85% | 24 | -5.90% | 19 |
| Technology | Software | 6 | 131.06% | 9 | -6.04% | 20 |
| Food Processing | Seafood | 1 | -42.43% | 39 | -7.65% | 21 |
| Distribution | Machinery & Equipment | 3 | 85.96% | 15 | -7.84% | 22 |
| Food Processing | Beverage | 3 | 77.75% | 18 | -11.40% | 23 |
| Financial Services | Bank | 8 | 54.30% | 22 | -12.57% | 24 |
| Manufacturing | Other | 18 | 4.92% | 33 | -13.02% | 25 |
| Financial Services | Other | 10 | 133.43% | 8 | -13.12% | 26 |
| Distribution | Fuel | 2 | 23.08% | 27 | -14.27% | 27 |
| Construction & Engineering | Engineering | 3 | 42.45% | 23 | -14.45% | 28 |
| Utilities | Diversified | 6 | 18.32% | 29 | -17.15% | 29 |
| Distribution | Other | 11 | 71.92% | 20 | -18.46% | 30 |
| Manufacturing | Automotive | 5 | 111.13% | 10 | -19.95% | 31 |
| Real Estate | Commercial | 10 | 0.42% | 35 | -21.59% | 32 |
| Real Estate | Diversified | 3 | -31.79% | 36 | -21.79% | 33 |
| Communications & Printing | Printing | 1 | 4.51% | 34 | -24.77% | 34 |
| Utilities | Renewables | 3 | 90.43% | 13 | -26.12% | 35 |
| Home & Building Products | Forestry | 7 | 19.06% | 28 | -27.20% | 36 |
| Real Estate | Residential | 8 | 17.22% | 30 | -29.49% | 37 |
| Construction & Engineering | Construction | 2 | -41.08% | 38 | -36.23% | 38 |
| Real Estate | Other | 6 | 155.30% | 7 | -38.85% | 39 |
| Gaming & Entertainment | Entertainment | 1 | -81.73% | 42 | -40.85% | 40 |
| Retail | Furniture & Electronic | 3 | -32.99% | 37 | -43.06% | 41 |
| Technology | Other | 7 | 505.89% | 1 | -57.10% | 42 |
| | | 250 | | | | |

Canadian Public Company Indices
December 31, 2022

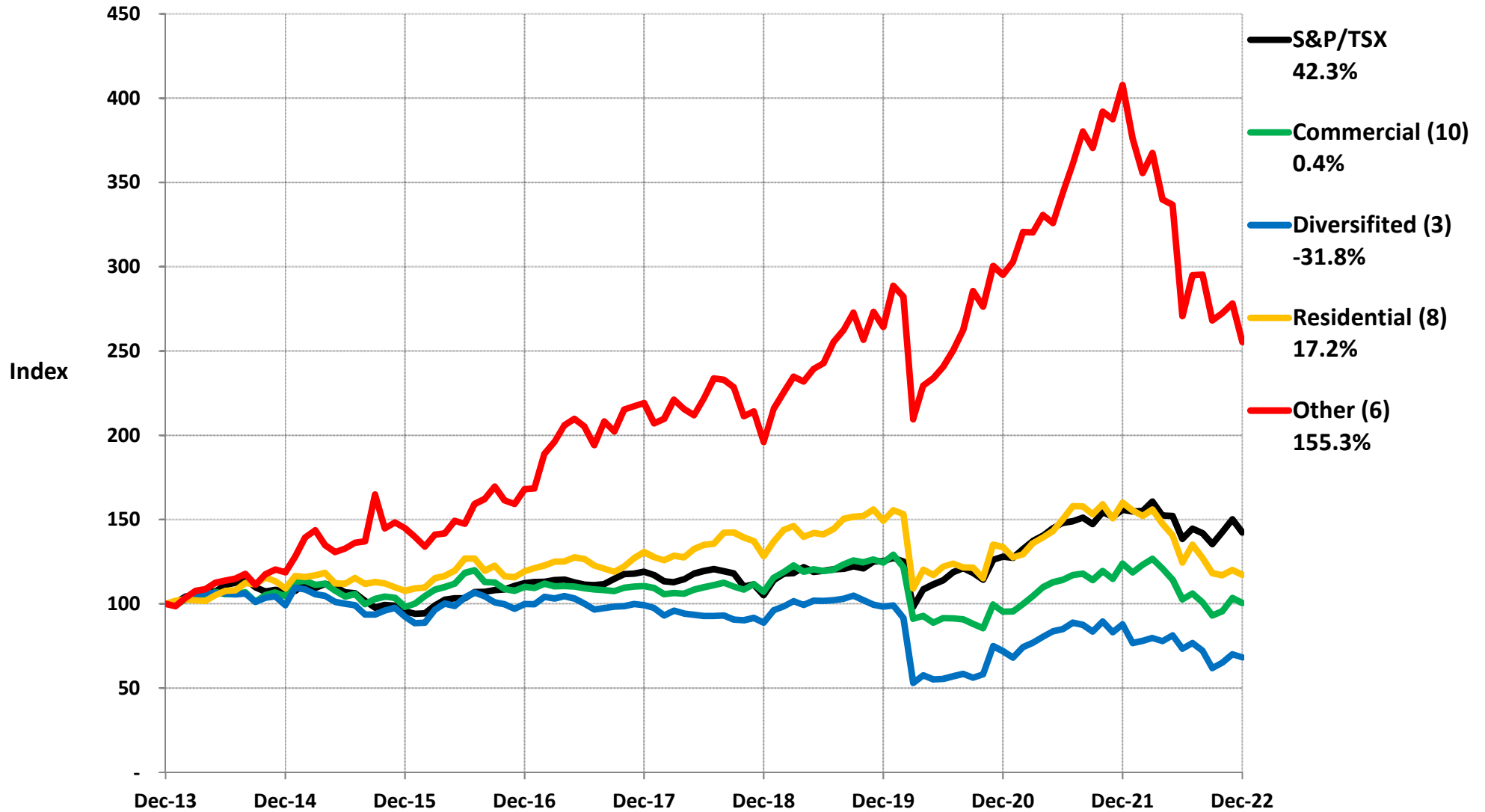
| Sector | Sub-Sector | Number of Companies/ Trusts | % | | % | |
|----------------------------|------------------------|--------------------------------------|------------------------------|-----------|------------------------------|-----------|
| | | | Change Since 31-Dec-13 | Ranking | Change Since 31-Dec-21 | Ranking |
| Technology | Other | 7 | 505.89% | 1 | -57.10% | 42 |
| Retail | Food & Beverage | 4 | 252.75% | 2 | 14.84% | 6 |
| Transportation | Other | 2 | 230.19% | 3 | 3.37% | 13 |
| Transportation | Trucking | 2 | 183.50% | 4 | -2.12% | 15 |
| Transportation | Rail | 2 | 183.04% | 5 | 6.75% | 9 |
| Transportation | Air | 2 | 156.23% | 6 | -2.43% | 16 |
| Real Estate | Other | 6 | 155.30% | 7 | -38.85% | 39 |
| Financial Services | Other | 10 | 133.43% | 8 | -13.12% | 26 |
| Technology | Software | 6 | 131.06% | 9 | -6.04% | 20 |
| Manufacturing | Automotive | 5 | 111.13% | 10 | -19.95% | 31 |
| Food Processing | Diversified | 2 | 103.11% | 11 | 10.10% | 8 |
| Mining | Gold | 20 | 102.42% | 12 | -4.91% | 18 |
| Utilities | Renewables | 3 | 90.43% | 13 | -26.12% | 35 |
| Retail | Other | 5 | 89.52% | 14 | 5.17% | 10 |
| Distribution | Machinery & Equipment | 3 | 85.96% | 15 | -7.84% | 22 |
| Retail | Restaurants | 3 | 80.51% | 16 | 12.88% | 7 |
| Home & Building Products | Other | 1 | 78.06% | 17 | 21.27% | 3 |
| Food Processing | Beverage | 3 | 77.75% | 18 | -11.40% | 23 |
| Utilities | Electricity | 4 | 72.11% | 19 | 3.05% | 14 |
| Distribution | Other | 11 | 71.92% | 20 | -18.46% | 30 |
| Mining | Other | 11 | 68.87% | 21 | 4.82% | 11 |
| Financial Services | Bank | 8 | 54.30% | 22 | -12.57% | 24 |
| Construction & Engineering | Engineering | 3 | 42.45% | 23 | -14.45% | 28 |
| Communications & Printing | Communications | 6 | 37.85% | 24 | -5.90% | 19 |
| Financial Services | Insurance | 8 | 36.23% | 25 | -3.10% | 17 |
| Food Processing | Other | 2 | 35.33% | 26 | 16.52% | 5 |
| Distribution | Fuel | 2 | 23.08% | 27 | -14.27% | 27 |
| Home & Building Products | Forestry | 7 | 19.06% | 28 | -27.20% | 36 |
| Utilities | Diversified | 6 | 18.32% | 29 | -17.15% | 29 |
| Real Estate | Residential | 8 | 17.22% | 30 | -29.49% | 37 |
| Energy | Production | 19 | 14.36% | 31 | 47.53% | 1 |
| Energy | Distribution | 6 | 12.48% | 32 | 3.68% | 12 |
| Manufacturing | Other | 18 | 4.92% | 33 | -13.02% | 25 |
| Communications & Printing | Printing | 1 | 4.51% | 34 | -24.77% | 34 |
| Real Estate | Commercial | 10 | 0.42% | 35 | -21.59% | 32 |
| Real Estate | Diversified | 3 | -31.79% | 36 | -21.79% | 33 |
| Retail | Furniture & Electronic | 3 | -32.99% | 37 | -43.06% | 41 |
| Construction & Engineering | Construction | 2 | -41.08% | 38 | -36.23% | 38 |
| Food Processing | Seafood | 1 | -42.43% | 39 | -7.65% | 21 |
| Gaming & Entertainment | Gaming | 1 | -45.20% | 40 | 17.58% | 4 |
| Energy | Services | 23 | -59.37% | 41 | 36.76% | 2 |
| Gaming & Entertainment | Entertainment | 1 | -81.73% | 42 | -40.85% | 40 |
| | | <u>250</u> | | | | |

Real Estate Most Recent Year



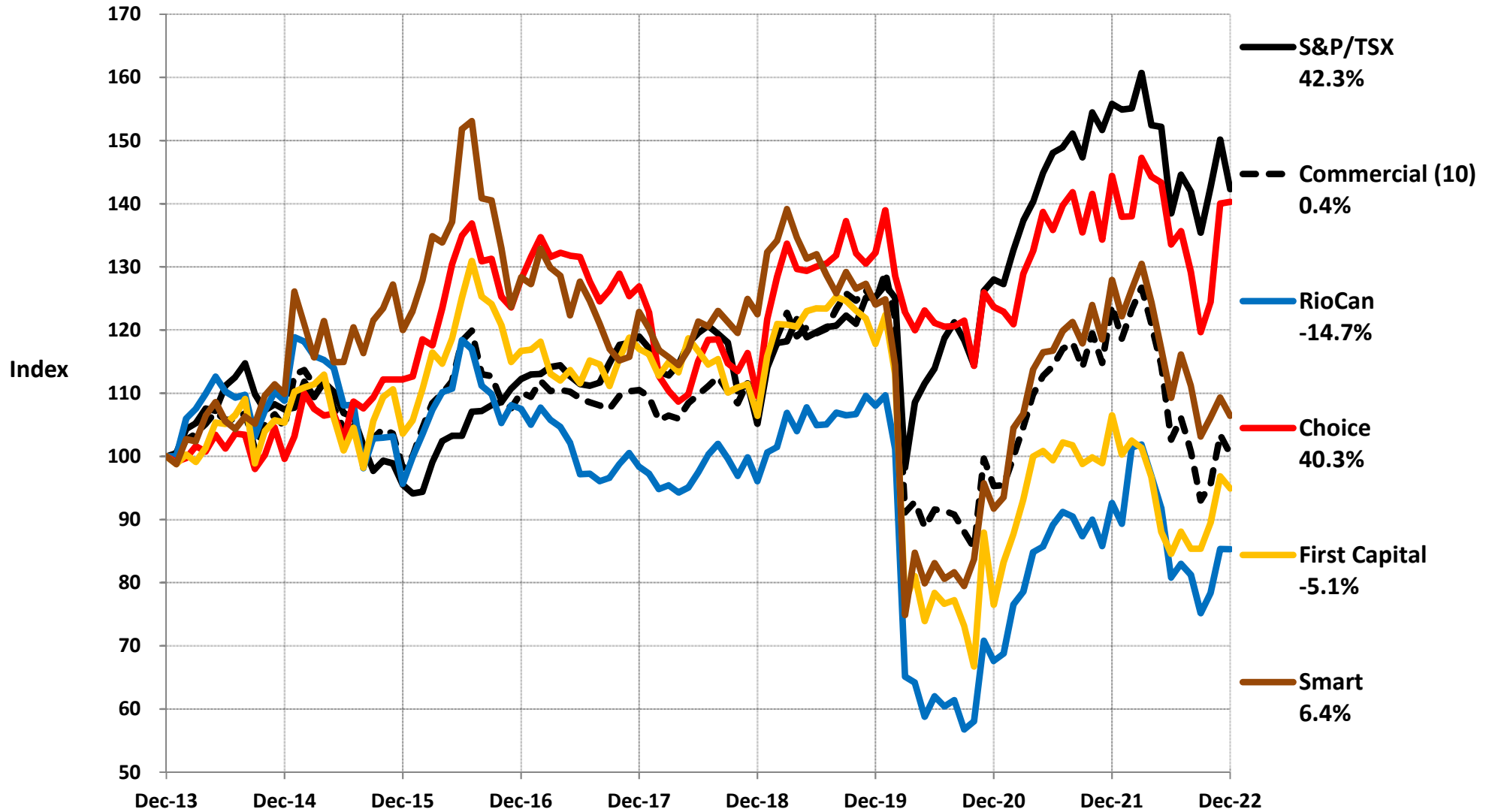
Sources: Financial Statements & Yahoo Finance

Real Estate Since December 31, 2013



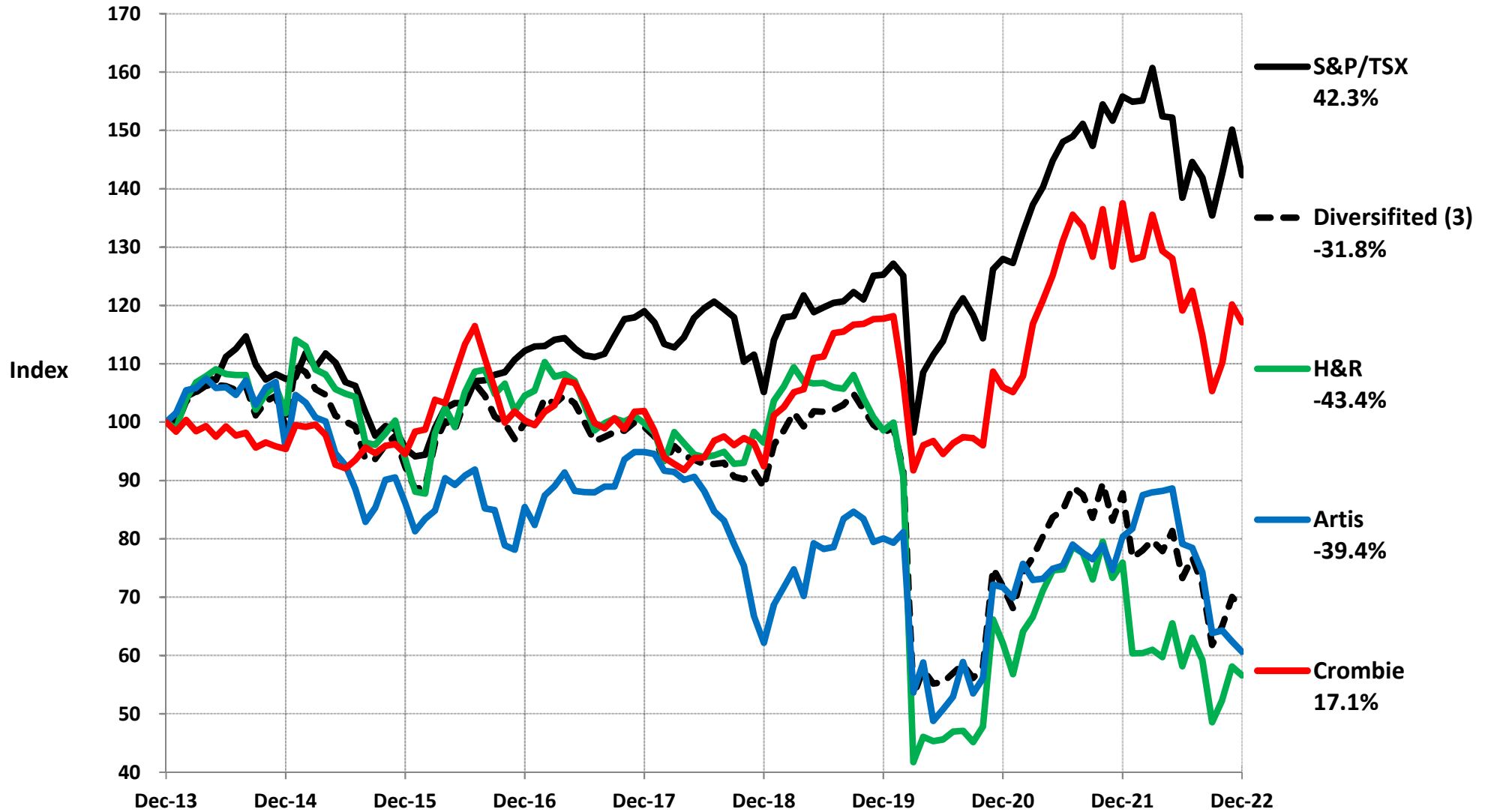
Sources: Financial Statements & Yahoo Finance

Real Estate Commercial Since December 31, 2013



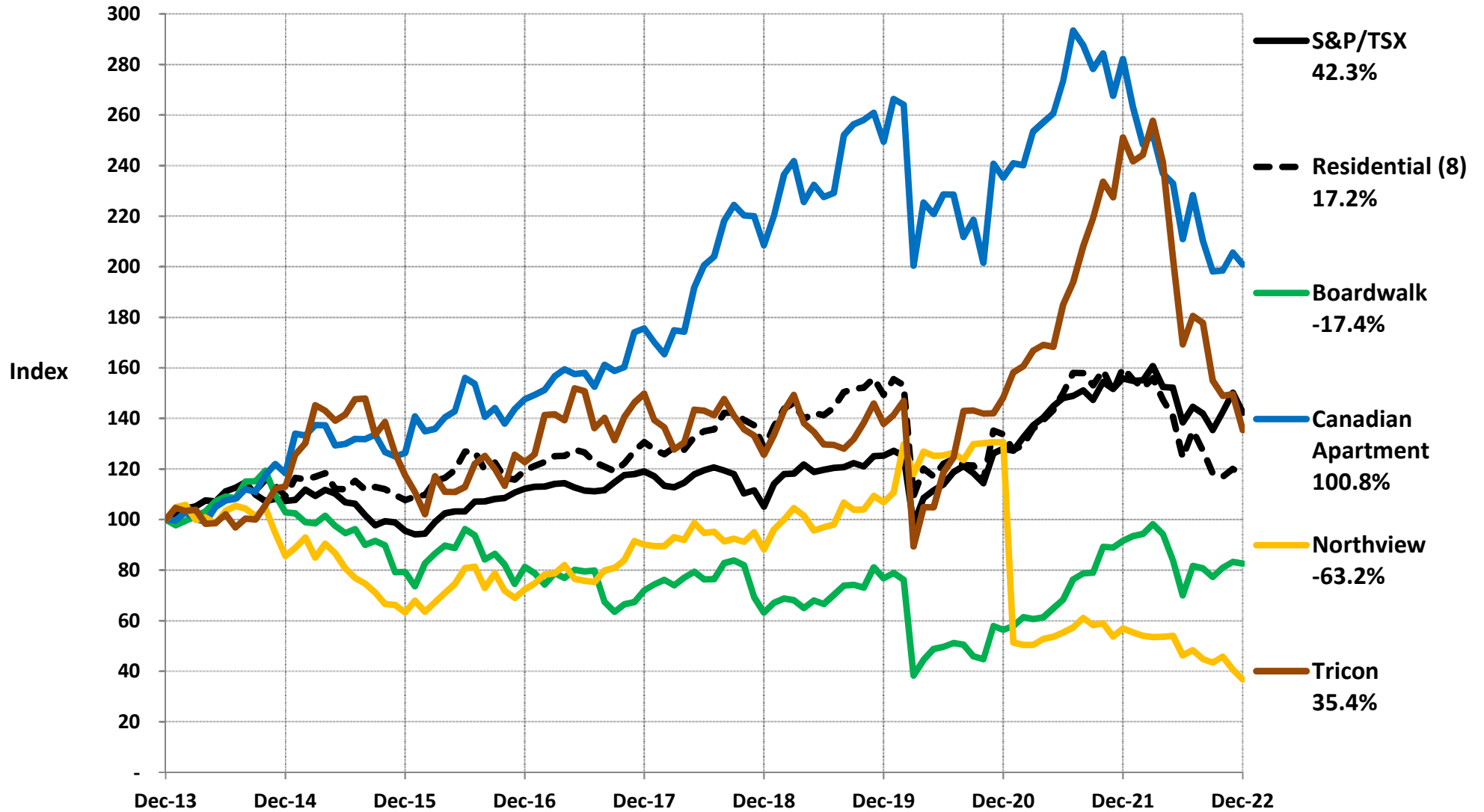
Sources: Financial Statements & Yahoo Finance

Real Estate Diversified Since December 31, 2013



Sources: Financial Statements & Yahoo Finance

Real Estate Residential Since December 31, 2013



Sources: Financial Statements & Yahoo Finance

Real Estate Other Since December 31, 2013

